



WORLD ASSOCIATION OF SOIL AND WATER CONSERVATION

HOT NEWS

Issue 10, 2015



WASWAC HOT NEWS No. 10, October, 2015

Contents

The third world conference of WASWAC	1-8
The Presentations PPTs from Invited Speakers for the IYFSWC are Available Online	9
Land and Soil Management Award	9
WASWAC Council Meeting was Held During the IYFSWC	10-11
The WASWAC Youth Committee Was Established	12
Coming meetings	13-15
Soil Loss by Water Erosion in Europe	16
The Third Issue of ISWCR	17
Vacancies	18-19
WASWAC Membership application form	20

Cover photo: Soil conservation Paragon in Hong'an County, Hubei Province, China. The photographer is Mr Zhupuan.

Editors: Dr Du Pengfei, Contributors include Prof. Li Rui, Prof. Miodrag Zlatic, Dr Panos Panagos, and Dr, Amir Kassam



IRTCES Building

(Where the Secretariat of WASWAC is located)

The Secretariat of WASWAC

No. 20 Chegongzhuang Road West, Beijing 100048, P. R. China

Tel: +86-10-68786579

Fax: +86-10-68411174

Email: waswac@foxmail.com waswac@163.com

For ISWCR paper submission:

<http://www.journals.elsevier.com/international-soil-and-water-conservation-research/>

WASWAC Website: www.waswac.org

**THE THIRD WORLD CONFERENCE
OF WORLD ASSOCIATION OF SOIL AND WATER CONSERVATION**

WASWAC World Conference III

August 22-26, 2016

Belgrade, Serbia

**NEW CHALLENGES AND STRATEGIES OF SOIL AND WATER CONSERVATION IN THE
CHANGING WORLD SUSTAINABLE MANAGEMENT OF SOIL AND WATER RESOURCES**

First Announcement and Call for papers

BACKGROUND

Perceived wisdom in the approach to evaluation, use and management of land resources is changing rapidly and dramatically. Past emphasis on land development focused on maximizing production and return from land use investment and planned against a background belief that suitable lands for expansion could always be found somewhere, is forced to give way to a more cautious approach - one that recognizes the finite extent of fertile land and the seemingly insatiable demands of a growing human population.

Globally, and in many individual countries, there is clear evidence of impending land shortage. Areas in which the combination of land and freshwater resources is moderately or well suited to agriculture are, for the most part, already in use. Efficient use of these lands is becoming a matter of life or death for increasing millions of mankind. In addition of Climate Changes, the main present world problem, makes mankind worried for the Earth's survival. Future generations in still larger numbers are more seriously at risk. Their livelihood is endangered by present production choices that degrade the different resources on which future agriculture depends. Global production must increase dramatically to meet foreseen demand but the levels and means of production targeted locally must be those that can be maintained on a sustained basis. Global, and even local land use must be sustainable.

"We need a value system which enshrines the principle of sustainability over generations. Sustainable development may mean different things to different people, but the idea itself is simple. We must work out models for a relatively steady state society, with population in broad balance with resources and the environment." (Tickell, 1993).

In this respect the aim of this Conference is to provide output regarding deep plenary sessions based on issues collected from the sessions with the conference main topics. These outputs could lead to establishing declaration(s) regarding the topics, or other documents. Selected and reviewed papers could be published in *International Soil and Water Conservation Research* (ISWCR), *Bulletin of Forestry*, or other journals.

Conference is initiated by:

World Association of Soil and Water Conservation – (WASWAC)



University of Belgrade, Faculty of Forestry, Serbia



Organised jointly with:

European Society of Soil Conservation (ESSC)



Convened in line with the objectives of:

European Commission



International Sediment Initiative (ISI – UNESCO)



Soil and Water Conservation Society



Water Management Institute “JAROSLAV ČERNÍ”



("Water for sustainable development and adaptation to climate change center" as a category 2 center under the auspices of UNESCO)

Forestry Institute of Serbia



International Research and Training Centre of Erosion and Sediment, Beijing/China



Institute of Soil and Water Conservation, CAS/MWR, Yangling/China



Chinese Society of Soil and Water Conservation” (CSSWC)



Sponsored by:

Ministry of Education, Science and Technological Development of the Republic of Serbia



Ministry of Agriculture and Environmental Protection



Serbian Chamber of Engineers



City of Belgrade



Foundation of Environmental Protection of Republic Serbia



GLOBAL CONFERENCE TOPICS

- A. New challenges to soil and water resources in condition of climate change
- B. Land degradation processes and mechanism
- C. Soil and water conservation strategies to adapt and mitigate climate change
- D. Soil and water conservation measures benefits assessment
- E. Sustainable watershed management
- F. Social and economic aspects and policies related to soil and water conservation
- G. Inovations and implemented global/regional/national projects in land conservation
- H. Education in soil and water conservation

CONFERENCE LANGUAGES

English will be the working language.

DEADLINES

- Registration: December 20th, 2015.
- Abstract submission: January 31, 2016.
- Abstracts Acceptance: February 15th, 2016.
- Full paper submission: April, 30th, 2016.
- **Registration fee** (Registration fee up to May 31, 2016; after May 31, 2016):
 - For non WASWAC and ESSC members: 300 EUR; after May: 350 EUR
 - For WASWAC and ESSC members: 200 EUR; after May: 250 EUR
 - For students: 100 EUR; after May: 150 EUR
 - For accompanying persons: 100 EUR; after May: 150 EUR

INTERNATIONAL SCIENTIFIC COMMITTEE

- Li Rui, President of WASWAC, Institute of Soil and Water Conservation, CAS/MWR, Yangling, China
- Miodrag Zlatić, Immediate past president of WASWC, University of Belgrade, Faculty of Forestry, Serbia
- Sukvibool-Chinapatana, Deputy-president of WASWAC, Land Development Department of Thailand, Thailand
- Carmelo Dazzi, President of ESSC, University of Palermo, Italy
- Edoardo Costantini, ESSC Secretary, CRA-ABP Agrobiology and Pedology Research Centre, Firenze, Italy
- Jose Rubio, Former president of ESSC, Valencia, Spain
- Jim Gulliford, Executive Director of SWCS, USA
- Ratan Lal, Former president of WAWAC, Ohio State University, USA
- Jorge A. Delgado, Councilor of WASWAC, USDA-ARS-SPNR, USA
- Hans Hurni, Former president of WASWAC, University of Berne, CDE, Switzerland
- Martin J. Haigh, former president and special representative of WASWC, Oxford Brookes University, UK
- Desmond E. Walling, former president of WASER, University of Exeter, UK
- Anil Mishra, UNESCO/Division of Water Sciences (SC/HYD)
- Panos Panagos, European Commission, Joint Research Centre, Ispra, Italy
- Ning Duihu, Secretary-in-chief of WASWAC, Deputy director of IRTCES, Beijing, China

- Zheng Fen Li, Dean of International college, NWAUFU, Yangling, China
- Liu Guobin, Director of Institute of Soil and Water Conservation, CAS/MWR., Yangling, China
- Johannes Huebl, BOKU, Vienna, Austria
- Winfried Blum, Councilor of WASWAC, BOKU, Vienna, Austria
- Surinder Kukal, Councilor of WASWAC, Punjab University, India
- Panagiotis Stefanidis, Aristotle University of Thessaloniki, Institute of Mountainous Water Management and Control, University Campus, Thessaloniki, Greece
- Ian Hannam, Councilor of WASWC, DLWC, Sidney, Australia
- Samran Sombatpanit, Advisor in WASWC Council, Thailand
- Stanimir Kostadinov, University of Belgrade, Faculty of Forestry,
- Milan Dimkić, Director of Water Management Institute "Jaroslav Černi", Belgrade, Serbia
- Nada Dragović, University of Belgrade, Faculty of Forestry
- Ivan Blinkov, University Kiril and Metodi, Skopje, Macedonia
- Ivan Marinov, Forestry Institute of BAS, Bulgaria
- Sevilay Hacıyakupogly, ITU, Istanbul, Turkey
- Biljana Radojević, UNESCO, Paris
- Valentin Golosov, Laboratory for Soil Erosion and fluvial Processes, Faculty of Geography, Lomonosov Moscow State University, Moscow, Russia
- Gustavo H. Merten, Hydraulic Research Institute, Hydraulics Department, Federal University of Rio Grande do Sul, Brasil
- Ildefonso Pla Sentis, University of Leida, Spain
- Ratko Ristić, Dean, Faculty of Forestry, University of Belgrade, Serbia
- Ljubinko Rakonjac, Director of Institute of Forestry, Belgrade, Serbia
- Paolo Porto, Dipartimento di Scienze e Tecnologie Agro-Forestali e Ambientali -Università degli Studi Mediterranea di Reggio Calabria, Italy
- Jože Papež, Ljubljana, Slovenia
- Jana Podhrázká, Research Institute for Soil and Water Conservation, Dep. for Land Use Planning Brno,
- Miroslav Dumbrovsky, Civil Engineering Faculty, Brno, Czech Republic
- Ivica Kisić, Department of General Agronomy, Faculty of Agriculture University of Zagreb, Croatia

- Franci Steinman, Faculty of Civil and Geodetic Engineering, University of Ljubljana, Ljubljana, Slovenia
- Slavoljub Dragičević, University of Belgrade, Faculty of Geography, Serbia
- Jelena Tomićević Dubljević, University of Belgrade, Faculty of Forestry, Serbia
- Radmilo Pešić, Agricultural Faculty, University of Belgrade, Serbia
- Dragoljub Todić, Institut for International Policy and Economy, Belgrade, Serbia

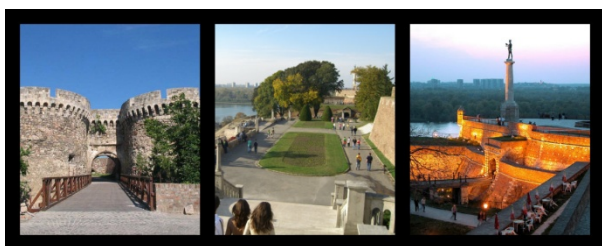
ORGANISATION COMMITTEE

- **Miodrag Zlatić**, D.Sc., Professor, Immediate past president of WASWC, University of Belgrade, Faculty of Forestry, Serbia
- **Nada Dragović**, D.Sc., Professor, University of Belgrade, Faculty of Forestry,
- **Stanimir Kostadinov**, D.Sc., Professor, University of Belgrade, Faculty of Forestry,
- **Ratko Ristić**, D.Sc., Professor, Dean of the Faculty of Forestry, University of Belgrade, Serbia
- **Mirjana Todosijević**, D.Sc., Assistant professor, Faculty of Forestry, University of Belgrade, Serbia
- **Snežana Belanović**, D.Sc., Associate Professor, Faculty of Forestry, University of Belgrade, Serbia
- **Vesna Đukić**, D.Sc., Assistant Professor, Faculty of Forestry, University of Belgrade, Serbia
- **Sara Lukić**, D.Sc, Assistant Professor, Faculty of Forestry, University of Belgrade, Serbia
- **Vukašin Milčanović**, Assistant, Faculty of Forestry, University of Belgrade, Serbia
- **Katarina Lazić**, Faculty of Forestry, University of Belgrade, Serbia
- **Saša Sofijanić**, Faculty of Forestry, University of Belgrade, Serbia
- **Tijana Vulević**, Assistant, Faculty of Forestry, University of Belgrade, Serbia
- **Jelena Belojica**, Assistant Professor, Faculty of Forestry, University of Belgrade, Serbia
- **Predrag Miljković**, Assistant, Faculty of Forestry, University of Belgrade, Serbia
- **Aleksandar Anđelković**, Assistant, Faculty of Forestry, University of Belgrade, Serbia
- **Katarina Lazarević**, researcher, Ph.D., Faculty of Forestry, University of Belgrade, Serbia
- **Natalija Momirović**, Ph.D. student, Faculty of Forestry, University of Belgrade, Serbia
- **Nevenka Tanasković**, Ph.D. student, Faculty of Forestry, University of Belgrade, Serbia

CONFERENCE VENUE

The Conference is planned to be held in the capital of Serbia, in Belgrade.

Belgrade (Beograd) is the capital of Serbia, having about 1,65 million inhabitants. Located in the south-east of Europe, in the Balkan Peninsula, at the confluence of the Sava and Danube rivers, Belgrade is one of the oldest cities in Europe and since ancient times has been an important focal point of traffic, at the intersection of the roads of Eastern and Western Europe. Belgrade is the center of Serbian culture, education, science and economy. While in the course of its tumultuous history, many nations were living in Belgrade for centuries, the majority of its current population (90%) are Serbs of Orthodox Christian religion. The official language is Serbian, while foreigners are recommended to use English in communication.



Kalemegdan is Belgrade's central park and fortress complex lying on a hill overlooking the [Sava](#) and [Danube](#) confluence, on the eastern side of the river Sava. This has been the sight of the [ancient Roman city of Singidunum](#), the [medieval](#) and [Turkish era Belgrade](#) and

was converted into a park in the mid 19th century. It is home to several galleries and museums, restaurants, sports courts, and the [Belgrade Zoo](#).

Skadarlija - The old bohemian quarter of Belgrade dates back to late 19th and early 20th century. It was back then when its kafane (taverns and restaurants) were a meeting place for many of the greatest figures of the cultural scene of the period. It is often compared with the Montmartre in Paris, both for its appearance and the cheerful, vigorous artists' atmosphere.



This neighbourhood was made popular and attractive because it was in the immediate vicinity of the National Theatre and former operetta, as well as musical halls housed in today's Balkan Cinema. By tearing down the café Dardaneli in 1901, which was on the site of today's National Museum, artists, writers, poets and ordinary visitors moved to the small cafe-restaurants of Skadarlija, bringing along the bohemian lifestyle and spirit. The significant cafe-restaurants of modern Skadarlija, such as Tri šešira, Dva jelena, Dva bela goluba, Velika Skadarlija, Zlatni bokal, Ima dana and Šešir moj, are worthy successors of the former Skadarlija. Judging by the beauty of its girls and young men, whose passion is widely known, we can count Belgrade in one of the most beautiful Serbian cities.

Excursion day: Belgrade rural surrounding (terraces established by local people), Deliblato sands, small

accumulations, ...

Post Conference Tour: Tara Mountain

CONTACT US

Conference Organizer Institution Contact:

University of Belgrade - Faculty of Forestry, Kneza Višeslava 1, 11030 Belgrade, Serbia;

Phone: +381 11 3053 905/ +381 11 3053 904;

Fax: +381 11 2545 485

Conference organizer's contact:

Prof. Miodrag Zlatic¹, D.Sc., Professor, President of Organising Committee

E-mail: miodrag.zlatic@sfb.bg.ac.rs;

Prof. Nada Dragovic¹, D.Sc., Professor

E-mail: nada.dragovic@sfb.bg.ac.rs

Mirjana Todosijevic¹, D.Sc., Assistant Professor

E-mail: mirjana.todosijevic@sfb.bg.ac.rs

Katarina Lazarevic¹, Researcher, Conference Secretariat,

E-mail: katarinalazarevic001@gmail.com

Conference Secretariat:

Katarina Lazarevic, Researcher,

Conference Secretariat,

E-mail: katarinalazarevic001@gmail.com

Natalija Momirovic, Researcher,

Conference Secretariat,

E-mail: natalijamomirovic@rocketmail.com

Further information or flyer download please visit our official website:

<http://3rdwaswacconference.sfb.bg.ac.rs/index.html>

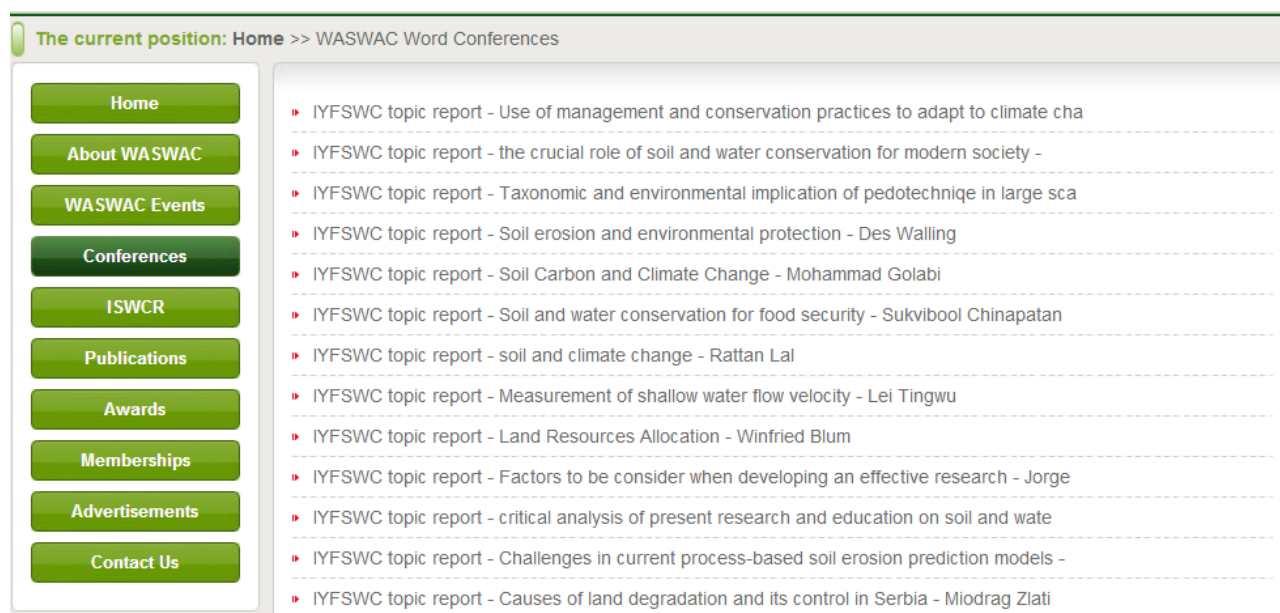
<http://www.waswac.org/newsShow.asp?fileSort=20&id=302>

The Presentations PPTs from Invited Speakers for the IYFSWC are Available Online

Reports from outstanding researchers at the IYFSWC have received attentions from not only participants, but also researchers distributed all over the world in the soil erosion related field. In order to provide people who are interested in this event, after asking for the reporter's suggestions, the secretariat of WASWAC put most of presentations on our official website. Please feel free to download any presentations you want to have via

<http://www.waswac.org/Conferences.asp>

And please let us know if you have any further requests or advices.



The current position: Home >> WASWAC Word Conferences

- IYFSWC topic report - Use of management and conservation practices to adapt to climate cha
- IYFSWC topic report - the crucial role of soil and water conservation for modern society -
- IYFSWC topic report - Taxonomic and environmental implication of pedotechnique in large sca
- IYFSWC topic report - Soil erosion and environmental protection - Des Walling
- IYFSWC topic report - Soil Carbon and Climate Change - Mohammad Golabi
- IYFSWC topic report - Soil and water conservation for food security - Sukvibool Chinapatan
- IYFSWC topic report - soil and climate change - Rattan Lal
- IYFSWC topic report - Measurement of shallow water flow velocity - Lei Tingwu
- IYFSWC topic report - Land Resources Allocation - Winfried Blum
- IYFSWC topic report - Factors to be consider when developing an effective research - Jorge
- IYFSWC topic report - critical analysis of present research and education on soil and wate
- IYFSWC topic report - Challenges in current process-based soil erosion prediction models -
- IYFSWC topic report - Causes of land degradation and its control in Serbia - Miodrag Zlati

Land and Soil Management Award

The prize rewards land use and soil management practices mitigating soil threats i.e. soil degradation, erosion, reduction of organic matter content, diffuse contamination, and compaction as well as the reduction of soil biodiversity, salinization, sealing, flooding and landslides. In doing so, the award sheds light on outstanding achievements, encouraging new concepts of land and soil protection and their implementation in land management, as well as enhancing awareness about the importance of land and soil functions.

Detailed information at:

http://esdac.jrc.ec.europa.eu/public_path/esdac_calls/ELO_AWARD2015-16.pdf

WASWAC Council Meeting was Held During the IYFSWC

The WASWAC council meeting was held on the afternoon of October 16, 2015 during the IYFSWC at Nanchang, China. Except for WASWAC councilors, some famous scientists or leaders in world academic associations were also invited to attend this meeting.



President Li Rui was in charge of this meeting. Prof. Ning Duihu, the secretary-general of WASWAC introduced the background, process, feedback, and results about the WASWAC outstanding youth paper award.

Dr Du Pengfei, the secretary of WASWAC, provided a presentation that reports the development of our association in recent two years (after last council meeting, which was held in Chiang Rai, Thailand, September, 2013) from six aspects including working team and financial support, members managements, publications, registration in China, conferences, and communications. Generally, main achievements are as following: 61 members have finished registration during 2014 and 2015 (by the end of October); 10

issues *International Soil and Water Conservation Research* (ISWCR) have been published; cooperation between ISWCR and ELSEVIER was started from the beginning of this year; Hot News were published regularly and provided plenty of useful information to our members; WASWAC has received the authorization from the Chinese government; about 10 times communication between WASWAC and other societies or academic institutes have been held, etc.

Prof. Miodrag Zlatic, the councilor of WASWAC, gave a plan on holding the third world conference of WASWAC in next August.

Proposed by President Li Rui, the WASWAC Youth Committee, as the sixth committee of WASWAC, was decided to be established by all attended councilors.

All participants expressed their confirmation to the progress achieved in the last two years through the efforts of all councilors especially the secretariat. The willingness of further cooperation between WASWAC and other associations (e.g. ESSC, SWCS, etc.) were discussed preliminary.

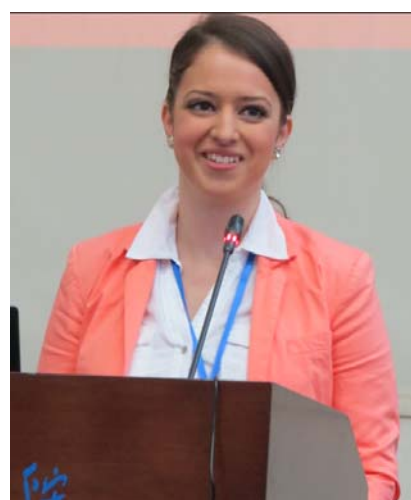
Participants including: Prof. Li Rui, Prof. Ning Duihu, Prof. Mu Xingmin, Prof. Lei Tingwu, Dr. Samran Sombatpanit, Prof. Miodrag Zlatic, Prof. Huang Chihua, Prof. Jorge Delgado, Prof. Winfried Blum, Prof. Mohammad Golabi, Prof. Ildefonso Sentis, Prof. Carmelo Dazzi, Prof. Jose Luis Rubio, Dr. Sukvibool Chinapatana, Ms Zheng Hui and Dr. Du Pengfei.



The WASWAC Youth Committee Was Established

In order to encourage young generation over the world to make great contribution to soil and water conservation, WASWAC decided to establish the WASWAC Youth Committee, which is following the existent 5 committees (publications, awards, academic meetings, finance and funds, international cooperation and development) and became the sixth special committee.

After discussion, the winners of WASWAC outstanding youth paper award, Dr Wang Bin (from China) and Dr Sayjro K. Nouwakpo (from USA) were appointed to be the chairman and deputy chairman, Miss Natalija Mirovic (from Serbia), as the representative of the young, was also elected to be the another deputy chairman.



Dr Wang Bin, Dr Sayjro K. Nouwakpo and Miss Natalija Mirovic (from left to right)

Who will be the members of the youth committee? We are inviting our councilors to recommend young people, who are currently involved in soil and water conservation and related field. The recommended people should be young, it is necessary to be less than 40 years old by the end of 2019. Hope to get the feedbacks from our councilors. We are expecting that our youth committee could be ready and take action soon.

Wish our youth committee a bright future!

COMING MEETINGS

European Geosciences Union General Assembly 2016

sss2.12 Soil Quality and Soil Conservation

Conveners: Thomas Scholten (University of Tübingen, Germany)
Wim Cornelis (Ghent University, Belgium)
Lillian Øygarden (Norwegian Institute of Bioeconomy Research, Norway)
Michael A. Fullen (University of Wolverhampton, UK)

Co-convenor: European Society for Soil Conservation (ESSC)

During recent years, land has been acquired world-wide on a large scale. Costs of buying and renting farmland in European countries have steadily increased and soil quality assessment is now on the agenda of large organizations, such as the FAO. This convincingly demonstrates that soil scientists, environmentalists and economists recognize that the large-scale manufacture of new soil or new land is not feasible. Thus, soil is an extremely valuable limited and non-renewable resource. Since soil is both private property and a shared resource, soil conservation and sustainable land management form highly dynamic and complex systems.

This session seeks to present new theories, approaches and examples of soil conservation that integrate state-of-the-art knowledge on the role of soil for both nature and society. The definition of soil quality, how to monitor it and its assessment and evaluation are further challenges that combine findings and techniques from both pure and applied research. The session is open to the exposition of diverse analytical, statistical and conceptual methods and interdisciplinary research is especially welcome.

Deadlines: Financial support is available for early career scientists: 1 December 2015
Abstract submission: 13 January 2016, 1300 CET



**European Geosciences Union
General Assembly 2016**

Vienna | Austria | 17–22 April 2016

ESSC EUROPEAN
SOCIETY for
SOIL
CONSERVATION

Details at: <http://egu2016.eu/home.html>

5th EUROSOIL International Congress



Details at: <http://www.eurosoil2016istanbul.org/>

International Conference on Conservation Agriculture and Sustainable Land Use



Main topics:

- Soil science and geomorphology in Conservation Agricultural Systems
- Agroecological research in Conservation Agricultural Systems
- Yields and economy
- Climate change and Conservation Agricultural Systems
- Conservation Agricultural Systems and carbon cycle
- Sustainability assessment of land use and cover change
- Precision Agriculture in Conservation Agricultural Systems
- Organic farming

Fees & Deadlines:

Abstract submission deadline: 15th January 2016

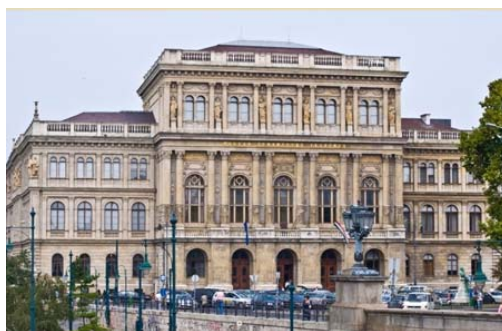
Notification about the result of abstract review: 15th February 2016

Deadline of Extended abstract: 30th June 2016

REGISTRATION

Early registration: before the 15th March 2016 – max. 260 Euro

Regular registration fee: between 15th March and before the 15th April – max 330 Euro



Conference Venue: the Hungarian Academy of Sciences, Budapest

Details at: <http://caslu2016.mtafki.hu/venue.html#>

1st International Conference Afro-Mediterranean Soils: Constrains and Potentialities for Durable Management

Main topics

Soil fertility and crop fertilization for sustainable productivity;
Soil behaviour under climate change context;
Soil carbon sequestration;
Role of extension for better soil management;
Soil contamination and decontamination;
Soil salinity and management;
Soil as component of organic farming in the Mediterranean context;
Soil erosion and desertification studies;
Remote Sensing and GIS for soil research and mapping;
Management of soil information.

Deadline for submission of extended abstracts:

November 30th, 2015.

Extended Abstracts should be sent to afromedsoil2015@gmail.com

Date and Venue:

December 18th and 19th, 2015

Palmeraie Golf Palace Hotel

Marrakech – Morocco

Others:

The organizers will publish a special issue of selected papers of this conference in a peer-referred journal. Selected authors will be notified to submit full papers by the organizer.

Thirty scholarships, including air tickets and accommodations, will be provided for the best extended abstracts. As for the other selected abstracts, accommodation will be provided for participants.

Soil Loss by Water Erosion in Europe



Description: At a resolution of 100m, this is the most detailed assessment yet of soil erosion by water for the EU. The study applied a modified version of the Revised Universal Soil Loss Equation (RUSLE) model, RUSLE 2015, which delivers improved estimates based on higher resolution (100 m compared to 1 km) peer-reviewed inputs of rainfall, soil, topography, land use and management from the year 2010 (the latest year for which most of the input factors are estimated). The model can be used to predict the effect of a range of policy scenarios. It is also replicable, comparable and can be extended to model other regions. All the input layers (Rainfall erosivity, Soil Erodibility, Cover-Management, Topography and Support Practices) have been peer reviewed and published as well.

Spatial Coverage: European Union 28 Member States **Resolution:** 100m

Time Reference: 2010 **Format:** Raster (Grid) **Release Date:** 1/9/2015

Input data: LUCAS Topsoil, European Soil Database, Lucas Earth Observations, Rainfall Erosivity Database at European Scale (REDES), CORINE Land Cover 2006, COPENICUS Remote Sensing, EUROSTAT (statistics on Crops, Tillage, Plant residues, cover crops), Digital Elevation Model (DEM) at 25m, Good Agricultural Environmental Condition (GAEC).

Additional data: Rainfall erosivity (R-factor), Soil Erodibility (K-factor), Topography (LS-factor), Cover Management (C-factor), Support Practices (P-factor) data are also available for download in the corresponding pages.

Details at: <http://esdac.jrc.ec.europa.eu/content/soil-erosion-water-rusle2015>

The Third Issue of ISWCR



INTERNATIONAL SOIL AND WATER CONSERVATION RESEARCH (ISWCR)

Volume 3, No. 3, September 2015

CONTENTS

G.L. Bagdi, P.K. Mishra, R.S. Kurothe, S.L. Arya, S.L. Patil, A.K. Singh, B. Bihari, O. Prakash, A. Kumar, P. Sundarambal Post-adoption behaviour of farmers towards soil and water conservation technologies of watershed management in India	161
Y. Dong, T. Lei, S. Li, C. Yuan, S. Zhou, X. Yang Effects of rye grass coverage on soil loss from loess slopes.	170
R.P. Shrestha, P.J. Ligonia Social perception of soil conservation benefits in Kondoia eroded area of Tanzania . . .	183
S.I. Alghamdi, A.F. Al Sulami, T.A. El-Zayat, B.G. Alhogbi, M. Abdel Salam Acid leaching of heavy metals from contaminated soil collected from Jeddah, Saudi Arabia: kinetic and thermodynamics studies	196
A. Kumar, A.K. Sharma, A. Rani Transport of solutes under transient flow conditions – A case study – Yamuna river sub basin (Kosi Kalan to Agra)	209
R.Y. Tallar, J.-P. Suen Identification of waterbody status in Indonesia by using predictive index assessment tool	224
G.C. Biawas, A. Sarkar, M.H. Rashid, M. Hassan Shohan, M. Islam, Q. Wang Assessment of the irrigation feasibility of low-cost filtered municipal wastewater for red amaranth (<i>Amaranthus tricolor</i> L. cv. Surma)	239



The third issue of ISWCR was released in the end of September. There were seven papers totally. You may find it in our official website or through ELSEVIER searching. All papers are available without payment. Welcome to log in WASWAC website with “waswac” for both the username and password to download the whole issue. Also welcome to submit your fresh fruits to our journal via

<http://www.journals.elsevier.com/international-soil-and-water-conservation-research/>

VACANCIES

1. Fully funded PhD opportunity (Competition, Home/EU): Remote sensing of rangeland quality, productivity and dynamics and the links to climate change



Rangelands in Africa cover approximately 2.1×10^9 ha and provide pasture to up to 204.72 million livestock populations. Furthermore, the rangelands support a vibrant tourism industry in most African countries due to the abundance of wildlife, which inhabit them. However, rapid human population increase in Africa has resulted in rangelands becoming areas of intense conflict between human and animals. These conflicts have led to a reduction in spatial distribution and diversity of species. Moreover, climate change is expected to lead to changes in rangeland condition, which could exacerbate the conflict between competing users. In East Africa, the rangelands are predominantly used for livestock grazing by pastoralists. In most cases, the pastoralists depend entirely on their livestock for food and livelihood. Therefore, negative changes in rangelands will have a significant impact on the livelihoods of these pastoralists. This study aims to map the extent and spatial dynamics of rangelands in East Africa since the 1970s. The study will also develop methods of monitoring rangeland condition/quality/productivity using in-situ measurements and remote sensing data and relate/link the dynamics of rangeland condition/quality to recent climate change. Finally, the study will try to predict future rangeland extent/condition/productivity using biome models under different climate change scenarios.

GECEO has a long-standing and sustained international reputation in areas of remote sensing of vegetation, carbon flux, vegetation burning and agriculture monitoring with a strong link with European Space Agency and publication in world-class journals. The

group also has a world-leading reputation for research on climate change impacts and adaptation strategies, with lead authorships in the Intergovernmental Panel on Climate Change (IPCC) Fifth Assessment Report.

http://www.southampton.ac.uk/geography/research/groups/global_environmental.page?

Closing Date: 8th January 2016

For full details and information on how to apply please visit:

http://www.southampton.ac.uk/geography/postgraduate/research_degrees/studentships.page?

<http://www.southampton.ac.uk/assets/imported/transforms/content-block/UsefulDownloads/Downloads/Download/>

2. MSc Remote Sensing and GIS



Duration: One year full-time or two years part-time. The academic year (September to September) is divided into three semesters: September to January; January to June; June to September.

Contact Time: Approximately 8-10 hours a week in the first two semesters. During semester three you will arrange your level of contact time with your assigned supervisor.

Assessment: The taught part of the course (Part 1) is delivered and assessed through lectures, student seminars, practical exercises, case studies, course work and formal examinations. The subsequent successful submission of your research dissertation (Part 2) leads to the award of MSc.

Entry Requirements: Good Undergraduate degree 2.2 (UK) (or above) equating to a mark of 56.5 or above in a related subject. European and International applicants can find their grade equivalence on our comparability page. Those who are not graduates must satisfy the University that they are of the required academic standard to pursue postgraduate study.

Details at: <http://courses.aber.ac.uk/postgraduate/gis-remote-sensing-masters/>



WASWAC MEMBERSHIP APPLICATION/RENEWAL FORM (Issued 120501)

(For applicants from all countries)

Name: (Ms./Mrs./Mr./Prof./Dr.)..... Gender: ☐F ☐M
Institution:
Postal address:
State/Province:..... Zip/Postal code:..... Country:.....
Phone:..... Fax:.....
Emails (Please give at least 2 addresses to ensure uninterrupted contact): (1).....
(2)..... (3).....
My specialized field(s):
Please sign me up for the WASWAC membership in category*: ☐1(IM)☐2(LM)☐3(OM)☐4(SM&GM)
Membership for the year(s).....@US\$.....= US\$
Donation for developing country membership, etc. US\$
Donation to the Moldenhauer Fund US\$
Total US\$

***Membership categories & rates** from July 18, 2005, amended March 3, 2007 and March 4, 2010.

- 1.** IM (Individual membership): US\$20 for 5 years for developing countries (In China, members pay 130 yuan RMB); US\$40 for 5 years for developed countries and persons working in international organizations worldwide.
- 2.** LM (Life membership): US\$80 for developing countries (In China, members pay 520 yuan RMB); US\$160 for developed countries and persons working in international organizations worldwide. Persons who have passed their 60th birthday pay only half of these LM rates.
- 3.** OM (Organization membership): For universities, research and implemental institutions, government agencies, NGOs, societies, associations and international organizations, etc. Persons belonging to an Organization member will receive the same online products and services as the other two above categories: \$100/year for an organization with up to 150 persons; \$150/year for an organization with up to 300 persons; \$200/year for an organization with up to 500 persons; and \$10/year for an additional 100 persons or part thereof.
- 4.** SM&GM (Student membership & Gift membership): US\$5/year worldwide, to be purchased to give to colleagues, friends, students, etc.

▲ How and where to submit this form and the money: You may send this form by e-mail (preferred), fax or post – and membership due – to:

Dr. Xiaoying Liu. WASWAC Treasurer, c/o IRTCES. No. 20 Chegongzhuang Road West, Beijing 100048, China. Tel: +86 10 68786413; Fax: +86 10 68411174; Email: waswac@foxmail.com; waswac@163.com. Membership fee can be sent through **Check, Bank Draft, Bank Transfer** and **WESTERN UNION**.

For sending money by foreign wires through a bank, please give the following information to your bank:

Name of Receiver (A/C Holder's Name): Liu Xiaoying

Bank Name and Address: Bank of China Beijing Branch, No. 2 Chao Yang Men Nei Da Jie, Dongcheng District, Beijing, 100010, P R China

A/C NO.: 3467 5879 1740; **Swift code:** BKCH CN BJ 110

Message to write on the Bank Sheet: WASWAC Membership due for Ms./Mrs./Mr./Prof./Dr., Country

NOTE: **1.** Do not deduct the bank fee from the amount of money to send. **2.** For sending money by wire/bank transfer or check please add US\$7 per transaction to compensate for the charge at the receiving bank in Beijing. This additional charge does not apply for **WESTERN UNION** or any payment of US\$50 or more.