



**WORLD ASSOCIATION OF SOIL AND WATER CONSERVATION**

# **HOT NEWS**

Issue 02, 2014



---

## WASWAC HOT NEWS No. 2, February, 2014

### Contents

|                         |   |         |
|-------------------------|---|---------|
| WASWAC News             | Establishment of Specialized Committees of WASWAC               | 1-2     |
|                         | The Executive Director of IAHR Visits the Secretariat of WASWAC | 2-3     |
|                         | Send your manuscripts to ISWCR                                  | 17      |
| Meetings                |   | 4-10    |
| Jobs                    |   | 11-13   |
| Book Introductions      |   | 15-16   |
| News and Reports        | Progress in the Management of Contaminated Sites in Europe      | 14      |
|                         | ISRIC and World Soil Museum                                     | 18-19   |
| Advertisement           |   | 3,10,19 |
| WASWAC Application Form |   | 20      |

---

**Cover photo:** Beautiful Scenery of Tarim River, Luntai County, Xinjiang, China

This issue is edited by Mrs. Mao Juan, contributors including Dr. Samran Sombatpanit, Prof. Li Rui, Prof. Carmelo Dazzi, Dr. Amir Kassam, Dr. panos.panagos and Dr. Du Pengfei.

---



IRTCES Building

(Where the Secretariat of WASWAC is)

---

The Secretariat of WASWAC

No. 20 Chegongzhuang Road West, Beijing 100044, P. R. China

Tel: +86-10-68786579

Fax: +86-10-68411174

Email: [waswac@foxmail.com](mailto:waswac@foxmail.com)    [waswac@163.com](mailto:waswac@163.com)

For ISWCR paper submission: [iswcr@foxmail.com](mailto:iswcr@foxmail.com)

WASWAC Website: [www.waswac.org](http://www.waswac.org)

## **Establishment of Specialized Committees of WASWAC**

In order to make our Council working more vigorous and efficiently, 5 specialized committees were organized for this term of 2014-2016. The Council president and secretariat will give a necessary supports to the committees. The related tasks will be developed shortly by all committees, hope that our members will also be involved with and give more attentions. Any feedbacks are welcomed to send to our secretariat by official emails, which are listed in the content page of this issue Hot News.

### **1. Publications Committee**

To take the responsibilities of WASWAC publications, including International Soil and Water Conservation Research(ISWCR), BULLETIN, , Hot News and Special Books.

Chairman: Julian Dumanski

Co-Chairs: Surinder Singh Kukal ( Chief editor of BULLETIN )

Members: William Critchley, James Owino, Alfred Hartmink, Shabbir Shahid

### **2. Academic Meetings Committee**

To take the responsibilities of academic meeting(s) including WASWAC World Conference, LANDCON-series meetings, and related workshops or training courses, of that WASWAC is the sponsor or co-sponsor.

Chairman: Miodrag Zlatic

Co-Chair: Chanapatana Sukvobool

Members: Carmelo Dazzi, Syaiful Anwar, Tijani Moshood, Franco Obando

### **3. Awards Committee**

To take the responsibilities of WASWAC awards including including Norman Hudson Memorial Award, Distinguished Researcher Award (once per 3 years), Distinguished Extensionist Award (once per 3 years), Special Award (once per 3 years), and any other awards that are suitable to be given by the Association.

Chairman: Ning Duihu

Co-Chair: Winfried Blum

Members: Miodrag Zlatic, Annie Mlinda Paz-Alberto, Mike Fullen, Ted Napier, Gustavo Merten

### **4. Finance Committee**

To take the responsibilities to raise and manage the funds of WASWAC including membership fees and others.

Chairman: Liu Xiaoying

Co-Chair: Li Dingqiang

Member: Machito Mihara, Rachid Mrabet, Valentin Golosov, Ning Duihu

### 5. International Cooperation Committee

To take the responsibilities of develop international cooperation including to organize international joint research projects, to communicate other international organizations, and to develop new organization members.

Chairman: Jose Rubio

Co-Chair: Ian Hannam

Members: Roberto Peiretti, Suraj Bhan, Coen Ritsema, Jorge A Delgado

## **The Executive Director of IAHR Visits the Secretariat of WASWAC**

Dr. Christopher George, the executive director of IAHR, take the opportunity that establishment of IAHR secretariat office in China to visit the secretariat of WASWAC on Feb. 19, 2014 in the company of Prof. Peng Jing, the head for international cooperation department of IWHR.



Prof. Ning Duihu, the secretary general of WASWAC introduced the basic information of WASWAC. Prof. Liu Xiaoying, gave a presentation in introducing IRTCES. The secretary of association, Dr. Du Pengfei illustrated the main development while the secretariat moved to IRTCES in starting official registration of WASWAC in China, applying for the approval of the *International Soil and Water Conservation Research*, revising statutes of WASWAC, strengthening member management, promoting regular international conference, etc.



Dr. Christopher George has strong interest in many aspects such as members' registration, routine management, conference holding. Finally, Dr. Christopher George and Prof. Ning Duihu both expressed strong wishes in collaboration and cooperation for two associations in the near future.





# MEETINGS

## 17th PSSST Annual Meeting and Scientific Conference: Sustaining Soil health

### And productivity thru appropriate use of inorganic and organic inputs

F  
I  
N  
A  
L  
  
A  
N  
N  
O  
U  
N  
C  
E  
M  
E  
N  
T



**PHILIPPINE SOCIETY OF SOIL SCIENCE  
AND TECHNOLOGY, INC. (PSSST)**  
c/o Bureau of Soils and Water Management  
SRDC Bldg, Elliptical Road corner Visayas  
Avenue, Diliman, Quezon City  
TIN: 005-417-107  
Telefax: Nos.: (632) 273-2474 local 3203  
Email: pssst\_pro06@yahoo.com

## 17<sup>th</sup> PSSST Annual Meeting and Scientific Conference

**Aklan State University**

**May 7-9, 2014**

**Theme:**

***Sustaining soil health and  
productivity thru  
appropriate use of inorganic  
and organic inputs***

**Co-sponsored by:**



**Aklan State  
University**

### *Rationale*

The 17<sup>th</sup> PSSST Annual Meeting and Scientific Conference is being organized to showcase soil science as an important discipline in the field of agriculture. It will particularly highlight the key roles of soil science in addressing issues on how to sustain soil health thru appropriate use of inorganic and organic inputs. This important event will give the participants from the academe, government, and private sectors an opportunity to interact and share experiences and research outputs in the field of soil science and its related disciplines. This will also enable them to upgrade their technical expertise, renew personal acquaintances, and meet new friends of the same scientific interests.

### *Guidelines for Abstract and Paper Submission*

#### **Extended Abstract**

Volunteer speakers (oral and poster) should submit an extended abstract, maximum of 2 pages including references, tables and illustrations not later than March 15, 2014. The extended abstract will be published in the Conference proceedings.

#### **Full Paper**

- Full paper for competition should be submitted not later than April 15, 2014.
- The manuscript should be limited to 10 pages and divided into sections: Abstract, Keywords, Introduction, Methodology, Results and Discussion, Conclusions, and References.
- The manuscript should be typed in single space, Times New Roman 11 pt font with 3 cm margins.
- Full paper should be written in Standard English.
- The name of author(s) and address of the institution(s), followed by the contact address (E-mail, Phone and Fax Number) of the first author or correspondence author should be indicated.

#### **Submission**

Extended abstract and full paper should be submitted by email to the PSSST Secretariat at pssst\_pro06@yahoo.com.

### *Poster Presentation*

Poster presenters should bring their printed posters to the conference. The size of the poster should be 118.5 cm x 84 cm, portrait orientation. Each letter should be readable from 1 m distance.

### *Important Dates to Remember*

- **March 15, 2014** - Deadline for submission of extended abstract for oral and poster presentation as well as nominations for the Achievement Award
- **March 30, 2014** - Decision on oral and poster presentation
- **April 15, 2014** - Deadline for submission of full paper
- **April 30, 2013** - Deadline for confirmation of attendance

### TENTATIVE PROGRAM

- May 6, 2014** - Arrival of Participants
- May 7, 2014** - Registration  
Opening Ceremonies  
Opening of Poster Exhibits  
Plenary Sessions  
Technical Sessions  
Fellowship
- May 8, 2014** - Technical Sessions  
Business Meeting
- May 9, 2014** - Technical Sessions  
Open Discussion  
Awarding Ceremonies  
Closing  
Tour
- May 10, 2014** - Departure

### CONFIRMATION SLIP

Name: \_\_\_\_\_  
Company/Institution: \_\_\_\_\_  
Mailing Address: \_\_\_\_\_  
Telephone No.: \_\_\_\_\_  
Facsimile No.: \_\_\_\_\_  
Mobile No.: \_\_\_\_\_  
E-mail Address: \_\_\_\_\_  
Response (Please check):  
\_\_\_\_\_ I will attend the 17<sup>th</sup> annual meeting and scientific conference.  
\_\_\_\_\_ I will not attend but I will pay my annual dues.  
\_\_\_\_\_ I will attend with accompanying person (Indicate the number of accompanying person).

**For further information, please contact any of the following:**

**Dr. Nenita E. Dela Cruz**  
Press Relations Officer  
c/o Central Luzon State University  
Science City of Muñoz, Nueva Ecija  
Mobile No.: 0919-326-9811 or 0933-520-7294  
Email: nenet\_dc@yahoo.com

**Ms. Angelita C. Marcia**  
Secretary  
c/o BSWM, Elliptical Road corner Visayas Ave.  
Diliman, Quezon City  
Telephone: 02-273-2474 local 3203  
Mobile No.: 0910-872-0693  
Email: angie\_marcia@yahoo.com

**For confirmation, payment of fees, and reservations, please contact:**

**Ms. Constancia G. Mangao**  
Business Manager  
c/o BSWM, Elliptical Road corner Visayas Ave.  
Diliman, Quezon City  
Telephone: (632) 923-0456 / 923-0492  
Mobile No.: 0919-388-5055  
Email: consmangao@yahoo.com.ph

### FEES AND DUES

**Registration Fee\*** \_\_\_\_\_ **Php 5,000**

*\* inclusive of conference kit and meals and snacks during the conference. Accommodation during the conference for 2 nights and tour fee is exclusive of the registration fee.*

**Annual dues** \_\_\_\_\_ **Php 200**  
(for regular members)

**Regular membership fee** \_\_\_\_\_ **Php 100**  
(for new members)

**Life membership fee** \_\_\_\_\_ **Php 2,000**  
(optional)

## Invitation to Host the 7th World Congress on Conservation Agriculture, 2017

The World Congress on Conservation Agriculture (WCCA) has been hosted by Spain, Brazil, Kenya, India and Australia, and the 6th WCCA will be held in Canada in 2014. WCCA is the premier international forum for broad discussion of the ideas, issues and impacts of sustainable crop production. It has been particularly valuable in bringing together scientists and practitioners from both the developed world and the developing world,

emphasizing the issues and importance of smallholder agriculture.

Early WCCAs were concerned primarily with the scientific, technical and adoption issues of conservation agriculture, but the focus of the conference steadily broadened. Aspects such as consultation, participation and knowledge sharing are now equally important, together with consideration of underpinning policy. The 7th WCCA will see increased farmer attendance and participation on the agenda.

The international organizing committee of the 5th WCCA in Brisbane during 2011 considered bids for the next congress and accepted the Conservation Agriculture Systems Alliance's (CASA) bid to host the 6th WCCA in North America during 2014. CASA is a communication network of North American conservation organizations that work to increase conservation in agriculture. Two CASA members, the Conservation Technology Information Center and the Soil Conservation Council of Canada, serve as co-hosts of the 6th WCCA.

National and regional organizations supporting Conservation Agriculture (CA) are invited to present full bids by 15 May 2014, to host the 7th WCCA. The International Steering Committee will review and recommend one bid for endorsement at the 6th WCCA. The Steering Committee might seek supplementary information from proposers in order to select a final bid.

Important considerations for hosting the 7th World Congress of Conservation Agriculture:

- **Resources**

- o Human: scientific, practitioner and institutional backing for proposal.
- o Financial: extent of known and anticipated support.
- o Endorsement by appropriate national and governmental bodies.

- **Location**

- o Proximity to significant groups of CA scientists.
- o Proximity to local examples of CA practice and development.
- o Relative to previous WCCA's (developed/developing country alternation).
- o Accessibility from most regions.
- o Opportunity to foster greater CA adoption in the host country.

- **Logistics**

- o Cost and convenience of transport, accommodation, communications, etc.
- o Availability of conference facilities.
- o Caliber of proposed organizing committees.



• **Themes and organization**

o Relevance of themes and content to a majority of CA practitioners and scientists.

o Nature of proposed organization.

o Potential alliances with other professional organizations.

**Bids to host the 7th World Congress on Conservation Agriculture will be received on behalf of the International Steering Committee by Sjoerd Duiker, Pennsylvania State University, at [sduiker@psu.edu](mailto:sduiker@psu.edu).**

**Bids should be received by 15 May 2014.**



**INTERNATIONAL CONFERENCE**



**Imola-Ravenna, Italy  
23/26 June 2014**

# Biogeochemical Processes at **Air-Soil-Water** Interfaces and **Environmental Protection**

<http://aswep-essc.unibo.it/>



**WORLD ASSOCIATION OF SOIL  
AND WATER CONSERVATION**



**EUROPEAN CONFEDERATION  
OF SOIL SCIENCE SOCIETIES**



**European  
Commission**



**INTERNATIONAL UNION  
OF SOIL SCIENCES**



**INTERNATIONAL SOIL  
CONSERVATION ORGANIZATION**



**SOCIETÀ ITALIANA  
DI PEDOLOGIA**



**SOCIETÀ ITALIANA DELLA  
SCIENZA DEL SUOLO**



**UNIVERSITÀ DEGLI  
STUDI DI PALERMO**



**CRA**  
CONSIGLIO PER LA RICERCA  
E LA SPERIMENTAZIONE  
IN AGRICOLTURA



**ALMA MATER STUDIORUM  
UNIVERSITÀ DI BOLOGNA**



**FONDAZIONE**  
Cassa di Risparmio di Imola

## ORGANIZING SECRETARIAT



**Agenzia Viaggi Santerno**  
Rep. Gruppi Incoming  
Via Saragat, 19 – 40026 Imola (BO)  
Tel. +39 0542 32372 Fax +39 0542 643339  
Internet: [www.viaggisanterno.com](http://www.viaggisanterno.com)  
E-mail: [patty@viaggisanterno.com](mailto:patty@viaggisanterno.com)  
E-mail: [annalisa@viaggisanterno.com](mailto:annalisa@viaggisanterno.com)

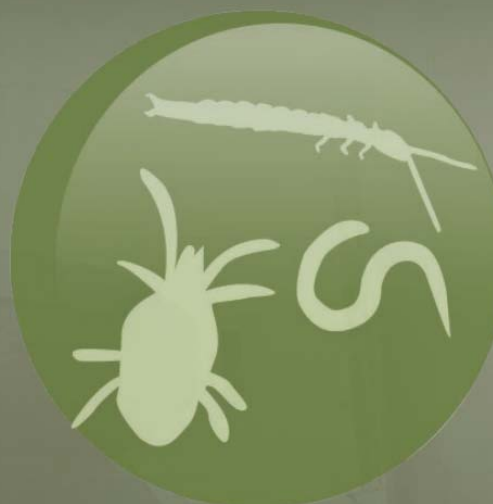
**Conference Theme**

The Earth's soils are habitats for millions of microbial and animal species. The activities of soil biota are critical to the well-being of human societies because their activities underpin the delivery of major ecosystem services.

To meet the challenges of global changes while sustaining the productivity of our natural and managed lands requires not only knowing the role of soil biota, but also implementing that knowledge. It is therefore critical that we incorporate the growing scientific knowledge on the provision of vital ecosystem services by soil biodiversity into future regional and national management and policy plans.

**Important dates :**

|                                   |                          |
|-----------------------------------|--------------------------|
| Abstract submission deadline      | <b>1st August 2014</b>   |
| Author early bird registration    | <b>1st August 2014</b>   |
| Author regular registration       | <b>3rd October 2014</b>  |
| Author late registration deadline | <b>31st October 2014</b> |



Read more about this conference on <http://colloque.inra.fr/gsb1>

Visit: <http://www.globalsoilbiodiversity.org>

**Mapping and Assessment of Ecosystems and their Services (MAES)**

“Member States, with the assistance of the Commission, will map and assess the state of ecosystems and their services in their national territory by 2014, assess the economic value of such services, and promote the integration of these values into accounting and reporting systems at EU and national level by 2020”.

This specific action aims at providing the knowledge base on ecosystems and their services in Europe. It underpins the achievement of the other targets of the strategy that relate to improving the outcomes of EU nature legislation, integrating biodiversity objectives into sectoral policies, combatting invasive alien species, and helping avert global biodiversity loss), as well as the other actions related to target two (insuring no net

loss of biodiversity and ecosystem services, and setting priorities to restore and promote the use of green infrastructure). Beyond the EU 2020 Biodiversity Strategy, it is also relevant to a number of other EU sectoral policies such as agriculture, maritime affairs and fisheries, and cohesion.

A coherent analytical framework has been developed to be applied by the EU and its Member States in order to ensure consistent approaches. It contributes to the ongoing discussion on the conceptual framework for sub-global assessments of ecosystems and ecosystem services under the Intergovernmental Platform on Biodiversity and Ecosystem services (IPBES). The second technical report proposes indicators that can be used at European and Member State's level to map and assess biodiversity, ecosystem condition and ecosystem services.

On 22 May 2014, international Biodiversity Day, the European Commission is hosting a high-level Conference to highlight the policy relevance of MAES. The conference will provide a platform to present the work undertaken to date at EU and Member State level as well as contributions from key stakeholders. It will demonstrate how reliable, high-quality information on the state of ecosystems and the services they provide can contribute to the advancement of biodiversity objectives, and to the integration of natural capital concerns into key EU sectoral policies.

The programme and practical information will be available on this website shortly.

Web registration: <https://scic.ec.europa.eu/fmi/MAES2014/start.php>



| Important Dates                   |                                    |                     |  |
|-----------------------------------|------------------------------------|---------------------|--|
| Early Bird Round Paper Submission |                                    |                     |  |
| 27<br>March<br>2014               | Abstract/ Full paper<br>Submission | 08<br>April<br>2014 | Paper Notification                       |
|                                   |                                    | 23<br>April<br>2014 | Camera Ready Copy/<br>Paper Registration |
| Late Round Paper Submission       |                                    |                     |  |
| 21<br>April<br>2014               | Abstract/ Full paper<br>Submission | 29<br>April<br>2014 | Paper Notification                       |
|                                   |                                    | 13<br>May<br>2014   | Camera Ready Copy/<br>Paper Registration |



Organized By



Published By & Archived In



Indexing By



Details at: [http://icabee.theired.org/important\\_dates.html](http://icabee.theired.org/important_dates.html)

[SOUND PRINCIPLE NO. 31]

Even grown-ups  
play with cool new toys.



# RiverSurveyor

and the new RiverSurveyor could well be  
your favorite new toy too.


- ◆ Continuous shallow-to-deep discharge measurements
- ◆ Ideal for extreme flood or drought conditions
- ◆ Instant data from your mobile device
- ◆ Use in canals, streams and rivers
- ◆ Small, portable and easy to use

M9  
S5

Complete 3-D velocity  
profiling, bathymetric  
measurement and  
discharge calculation as  
you transect the channel

FREE Technical notes, web-based training and product information at [www.sonotek.com](http://www.sonotek.com)  
Questions? E-mail: [inquiry@sonotek.com](mailto:inquiry@sonotek.com) or call +1.858.546.8327  
See the RiverSurveyor-S5 in action! [youtube.com/SonTekYSI](http://youtube.com/SonTekYSI)

Sound Principles. Good Advice.



YSI incorporated



## **JOBS**

### **1. Agricultural Engineer, Post Doctorate or Associate Scientist at International Maize and Wheat Improvement Center (CIMMYT)**

We are seeking an experienced Agricultural Engineer to join an innovative USAID funded agricultural R4D project focused on efficient surface water irrigation, scale-appropriate mechanization, and conservation agriculture, to sustainably intensify cropping systems in Southern Bangladesh. The five-year \$13 million project activities are being implemented in collaboration with International Development Enterprises (iDE), and will integrate and build upon synergies created with the already operational Cereal Systems Initiative for South Asia (CSISA) in Bangladesh project. As Agricultural Engineer, you will work to implement and applied research and extension program in partnership with public and private sector partners centered on the use of efficient and scale-appropriate agricultural machinery to intensify dry season cropping in Southern Bangladesh.

The position will be based in Dhaka, Bangladesh and will require very frequent and extensive travel between project field sites within Bangladesh, primarily districts of Jessore, Faridpur, Khulna, and Barisal. In addition, considerable international travel and collaboration with partners will be required.

Specific duties of this position include:

Implement an applied research program to develop, test, refine, and implement new agricultural machineries and irrigation equipment that can be used by farmers to intensify their cropping systems; Document the results of this research program through high-quality, peer-reviewed papers in leading international journals; Collaborate with CIMMYT's international scientists to analyze farmers' adoption and use of new machineries and cropping practices; Oversee agricultural mechanization extension and training activities throughout Southern Bangladesh, in collaboration with government extension and private-sector partners; Contribute to the development of training modules and outreach materials that will support agricultural service providers, extension agents, and private sector agricultural machinery manufacturers/dealers; Help to develop strategic relationships with public and private sector partners to advance scale-appropriate mechanization;

Mentor and overseeing the work of project-based field staff working to implement the use of improved agricultural machineries; Maintain and archive field and experimental data in alignment with CIMMYT's data management system.

Contact Details:

Guillermo Flores, g.flores@cgiar.org

Human Resources/CIMMYT

Reference Number: 12343

Deadline: Friday, 28 March, 2014

## 2. Graduate Geologist



### **Who we are:**

ERS is a multidisciplinary contaminated soil and groundwater remediation contractor that undertakes various site investigation strategies and offers bespoke solutions to contaminated soil and ground water problems. Our clients range from individual house holders to national and international blue chip companies.

### **Who we're looking for...**

ERS is currently looking for a full time Graduate Earth Scientist/Geologist to assist with our growing site investigation workload.

### **Our ideal candidate will have:**

Your Qualifications:

A minimum of a BSc Geology/Earth Science or a relevant subject

Essential Requirements:

IT/data management skills

Full UK Driving licence

Desired Experience (preferable but not essential)

Some experience in the ground investigation/environmental industry

Your Personality, To be a good fit in ERS, we're looking for someone who has

Excellent organisational skills

Excellent communication skills both with colleagues and clients

**The Role Involves...**

Writing desk studies

Factual reporting

Logging of Soils and Rock to relevant BS and Eurocode Standards

Trial Pitting

Gas & Groundwater Monitoring and Sampling

Site Supervision of Ground Investigation Sites

Travelling throughout the UK

**Location...**

The successful applicant will be based in our Glasgow office.

**In return...**

ERS provides a competitive remuneration package tailored to your skills, experience and requirements.

ERS is an equal opportunities employer. No applicant will be treated less favourably on the grounds of sex, marital or parental status, race, ethnic or national origin, colour, disability, sexual orientation, religion or age.

**Interested?**

If you feel that your skills, experience and personality would fit well with the ERS team, send us your CV in the strictest confidence to [jobs@ersremediation.com](mailto:jobs@ersremediation.com) or to Recruitment, ERS, Westerhill Road, Bishopbriggs, Glasgow G64 2QH.

**If you want to advance in your career**

**Make English  
Part Of Your Life**

## Progress in the Management of Contaminated Sites in Europe



### J R C R E F E R E N C E R E P O R T S

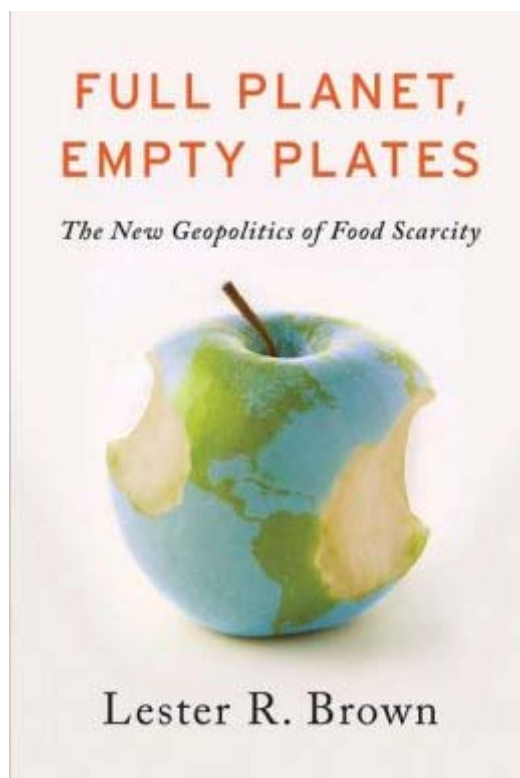


This report presents the current state of knowledge about progress with the management of contaminated sites in Europe. It directly supports the EU Soil Thematic Strategy which identifies local soil contamination as an important issue. It presents facts, analyses and methods on the management of Contaminated Sites, which can inform policy makers, professional practitioners, researchers, citizens and the media. The report is based on data that were collected from the National Reference Centres for Soil in 39 countries belonging to the European Environment Information and Observation Network (EIONET) during a campaign organised by the JRC European Soil Data Centre in 2011-2012. The information presented in this report is based on a set of indicators which have been agreed on and used by the EIONET for more than a decade. This set of indicators contributes to the Core Set Indicator "Progress in the Management of Contaminated Sites" (CSI 015) of the European Environment Agency (EEA), which is used for reporting on the State of the Environment.

Full report available at: [http://eusoils.jrc.ec.europa.eu/ESDB\\_Archive/eusoils\\_docs/other/EUR26376EN.pdf](http://eusoils.jrc.ec.europa.eu/ESDB_Archive/eusoils_docs/other/EUR26376EN.pdf)



# Book Introductions



Publication Date: October 1, 2012

Print Length: 161 pages

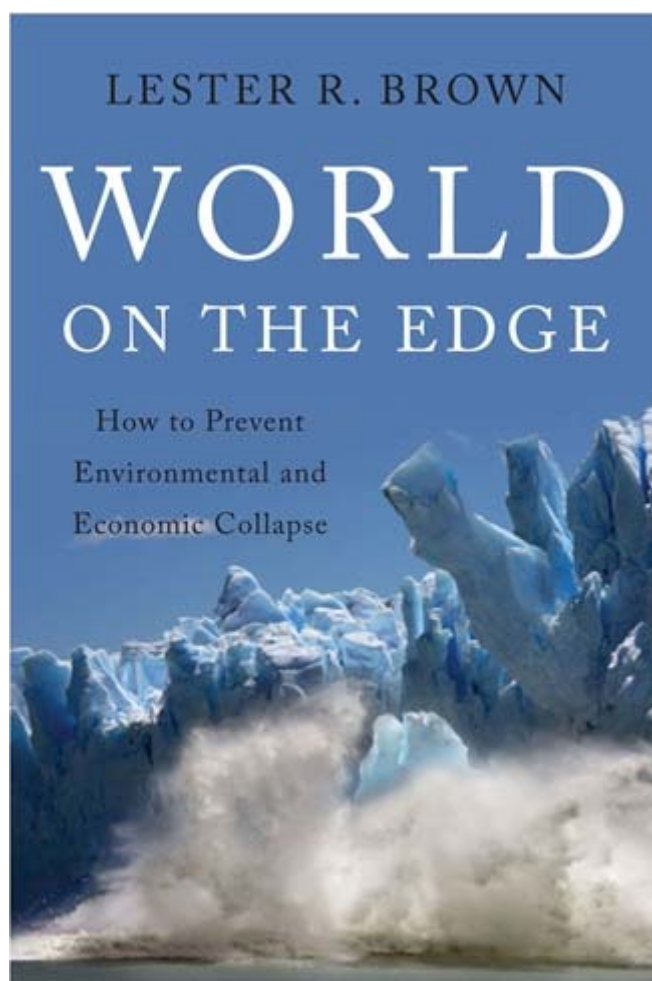
Page Numbers Source ISBN: 0393344150

Publisher: W. W. Norton & Company; 1 edition (September 24, 2012)

Language: English

With food scarcity driven by falling water tables, eroding soils, and rising temperatures, control of arable land and water resources is moving to center stage in the global struggle for food security. “In this era of tightening world food supplies, the ability to grow food is fast becoming a new form of geopolitical leverage. Food is the new oil,” Lester R. Brown writes.

What will the geopolitics of food look like in a new era dominated by scarcity and food nationalism? Brown outlines the political implications of land acquisitions by grain-importing countries in Africa and elsewhere as well as the world’s shrinking buffers against poor harvests. With wisdom accumulated over decades of tracking agricultural issues, Brown exposes the increasingly volatile food situation the world is facing.



Released 2011

Author: Lester R. Brown

ISBN: 978039339499

Pages: 240

We are facing issues of near-overwhelming complexity and unprecedented urgency. Our challenge is to think globally and develop policies to counteract environmental decline and economic collapse. The question is: Can we change direction before we go over the edge?

Lester Brown looks at our economic future through an environmental lens to develop a plan that will sustain civilization. He concentrates on four major components that will head us towards a brighter future: a massive cut in global carbon emissions, the stabilization of world population, the abatement of poverty, and the restoration of our planet's diverse natural landscape.

Details at: <http://www.earth-policy.org/books/wote>

## Send your manuscripts to ISWCR

ISWCR is the official journal of WASWAC. Since its publication, ISWCR has been published 3 issues successfully. This journal mainly reports fundamental and applied research concerning all aspects of soil and water conservation and to promote and advocate best soil and water conservation practices around the world. So any manuscripts that address theories and practices, biophysical and socioeconomic processes, measurement and modeling techniques in relation to soil and water conservation, for erosion control and runoff retention, environmental protection, and sustainable land and water management in the broad context of global change, do not hesitate to send us through [iswcr@foxmail.com](mailto:iswcr@foxmail.com). Your fruit will be published as soon as possible.



The covers of first three issues of ISWCR

## **ISRIC and World Soil Museum**

ISRIC - World Soil Information is an independent, science-based foundation. The institute was founded in 1966 following a recommendation of the International Soil Science Society (ISSS) and United Nations Educational, Scientific and Cultural Organization (UNESCO). It has a mandate to serve the international community with information about the world's soil resources to help addressing major global issues.

ISRIC is the ICSU World Data Centre for Soils (WDC-Soils) since 1989, a member of the Open Geospatial Consortium (OGC) and collaborates with a wide range of partners worldwide.

ISRIC operates on three priority areas: soil data and soil mapping, application of soil data in global development issues, training and education.

ISRIC provide the following services:

**Data supply** and co-developing uniform tools for collecting and analysing soil related data. From the start ISRIC has collected, interpreted, collated and up-scaled soil data from different countries to a regional or global scale, and developed standardized tools to do so. Our data policy is built around the concepts of full and open access, and of data sharing being provided at no cost or for no more than the cost of reproduction. In 1989 we obtained the prestigious status of ICSU World Data Centre for Soils; in 2011 this accreditation was renewed.

**Applied research.** ISRIC supports interdisciplinary and participatory projects that address global issues including combatting land degradation, mitigating climate, improving food security and using water more efficiently.

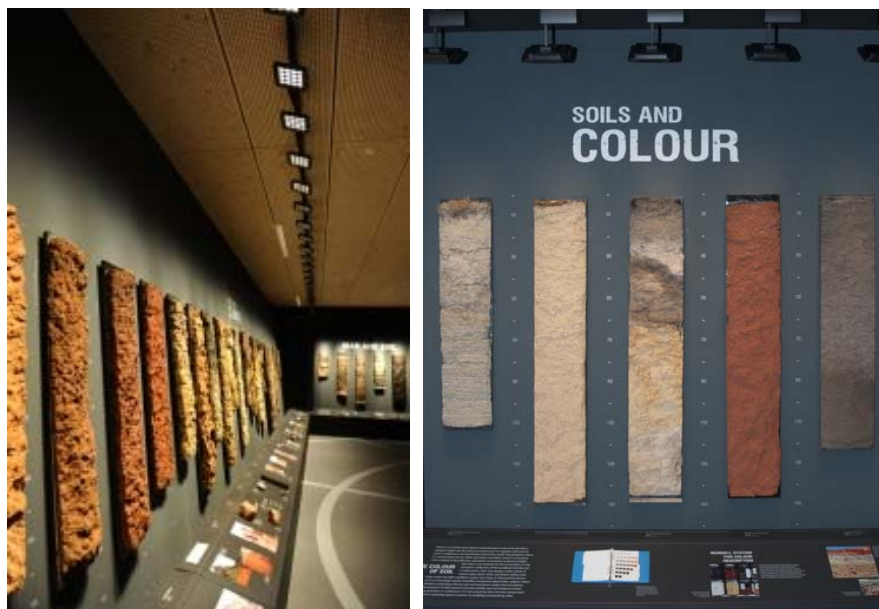
**Training.** ISRIC researchers support people doing research on land and water resources with training and practical field work. We provide training for different users of soil data including students in soil science, agronomists, land planners and agricultural extension workers.

**Education** about soils through our World Soil Museum. ISRIC has the most extensive collections of soil samples from around the world. We can tell many stories about soils and their role in food security, climate change, water shortage and biodiversity. All stories can be illustrated by profiles, maps, pictures, micro slides, digital means or other attributes.

**Access to a library and map collection.** At ISRIC soil maps and articles from around the world can be stored, scanned and made accessible. We have already built up a collection of more than 30,000



articles, country reports, books and soil maps, with emphasis on the developing countries. These materials are being used to generate a range of databases and derived interpretations.



In the World Soil Museum of ISRIC, visitors can learn about the role of soils in life and ecosystems and get an impression of the enormous variation of soil types in the world, from the colourful volcanic ash soil from Indonesia to the man-made Terra Preta soil from the Amazon. The museum displays soil monoliths with accompanying data including a full profile description, soil chemical and physical data, and information on the landscape and land-use.

Details at: <http://www.isric.org/services/world-soil-museum>

**ICT International Standing Wave Technology**  
Soil Moisture Measurement



MP306



MP406



MPkit

<http://www.ictinternational.com/soils.html#soilmoisture>



INTERNATIONAL

**Solutions for soil, plant & environmental monitoring**

[www.ictinternational.com](http://www.ictinternational.com)

Ph: +61 2 6772 6770 sales@ictinternational.com.au

**Applications:**

- Volumetric soil moisture content • Forest and catchment hydrology
- Soil columns and geo-engineering • Landfill cover and mine closures
- Irrigation scheduling



**WASWAC MEMBERSHIP APPLICATION/RENEWAL FORM** (Issued 120501)

(For applicants from all countries)

Name: (Ms./Mrs./Mr./Prof./Dr.)..... Gender: ☐F ☐M  
Institution: .....  
Postal address: .....  
State/Province:..... Zip/Postal code:..... Country:.....  
Phone:..... Fax:.....  
Emails (Please give at least 2 addresses to ensure uninterrupted contact): (1).....  
(2)..... (3).....  
My specialized field(s): .....  
Please sign me up for the WASWAC membership in category\*: ☐1(IM)☐2(LM)☐3(OM)☐4(SM&GM)  
Membership for the year(s).....@US\$.....= US\$ .....  
Donation for developing country membership, etc. US\$ .....  
Donation to the Moldenhauer Fund US\$ .....  
Total US\$ .....

\***Membership categories & rates** from July 18, 2005, amended March 3, 2007 and March 4, 2010.

- 1.** IM (Individual membership): US\$20 for 5 years for developing countries (In China, members pay 130 yuan RMB); US\$40 for 5 years for developed countries and persons working in international organizations worldwide.
- 2.** LM (Life membership): US\$80 for developing countries (In China, members pay 520 yuan RMB); US\$160 for developed countries and persons working in international organizations worldwide. Persons who have passed their 60<sup>th</sup> birthday pay only half of these LM rates.
- 3.** OM (Organization membership): For universities, research and implemental institutions, government agencies, NGOs, societies, associations and international organizations, etc. Persons belonging to an Organization member will receive the same online products and services as the other two above categories: \$100/year for an organization with up to 150 persons; \$150/year for an organization with up to 300 persons; \$200/year for an organization with up to 500 persons; and \$10/year for an additional 100 persons or part thereof.
- 4.** SM&GM (Student membership & Gift membership): US\$5/year worldwide, to be purchased to give to colleagues, friends, students, etc.

▲ **How and where to submit this form and the money:** You may send this form by e-mail (preferred), fax or post – and membership due – to:

**Dr. Xiaoying Liu.** WASWAC Treasurer, c/o IRTCES. No. 20 Chegongzhuang Road West, Beijing 100048, China. Tel: +86 10 68786413; Fax: +86 10 68411174; Email: [waswac@foxmail.com](mailto:waswac@foxmail.com); [waswac@163.com](mailto:waswac@163.com). Membership fee can be sent through **Check, Bank Draft, Bank Transfer** and **WESTERN UNION**.

For sending money by foreign wires through a bank, please give the following information to your bank:

**Name of Receiver (A/C Holder's Name):** Liu Xiaoying

**Bank Name and Address:** Bank of China Beijing Branch, No. 2 Chao Yang Men Nei Da Jie, Dongcheng District, Beijing, 100010, P R China

**A/C NO.:** 3467 5879 1740; **Swift code:** BKCH CN BJ 110

**Message to write on the Bank Sheet:** WASWAC Membership due for Ms./Mrs./Mr./Prof./Dr. ...., Country .....

**NOTE:** **1.** Do not deduct the bank fee from the amount of money to send. **2.** For sending money by wire/bank transfer or check please add US\$7 per transaction to compensate for the charge at the receiving bank in Beijing. This additional charge does not apply for **WESTERN UNION** or any payment of US\$50 or more.